



(M) adUL2200BC

Puertas & Portones Automáticos, S.A. de C.V.

¡Nuestra pasión es la Solución!...

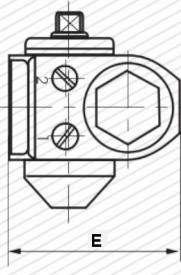
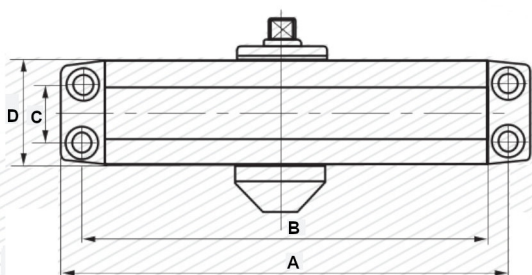
»CIERRAPUERTAS HIDRAULICO (M) DE SOBREPONER AJUSTABLE Y REGULABLE FUERZA 3 - 6 (40 A 150KG) MARCA ADS MOD.UL2200BC.

- Recommended type for Fire Door, UL 10C Certified
- Meet with ANSI 156.4 Grade 1, 10 years Guarantee
2 Million Life Cycles
- Multi-size, Adjustable Spring force from 1~4, 3~6
- Rack and pinion mechanism contained in a high tensile precision cast aluminum housing.
- Needle Bearing
- Optional Delay Action and Slim/Full Plastic Cover
- ADA: 5014 with Barrier Free (BF) Function for elderly / handicapped
- Universal application. Non-handed for standard, top jamb or parallel arm installation.



(OU-00002-00)

UL2200BC SERIES
DOOR CLOSER



Type	Dimension(mm/inch)					Suit for door weight(kg)
	A	B	C	D	E	
UL2200BC	248(93/4")	230(91/16")	19(3/4")	44.5(13/4")	72(27/8")	40-150

CROSS REFERENCES

NORTON	DORMA	HAGER	PARKER	LCN	SARGENT	YALE
1600	640/7300/7400	5300	900	1070/1370	1130	50

The data on this represents our judgment of which are more similar, since no product is exactly alike each other, it is not guaranteed nor represented that any specific product exactly equals any other product.

(229) 288-1552

portonesautomaticos@adsver.com.mx
portonesautomaticos@prodigy.net.mx



V05.20

(229) 927-5107, 167-8080, 167-8007, 151-7529.



www.adsver.com.mx